



PRECISE
CUTTING TOOLS Pvt Ltd

PRECISE CUTTING TOOLS PVT LTD



Strive to develop Precise as preferred choice of our customers for any type of special tooling requirement



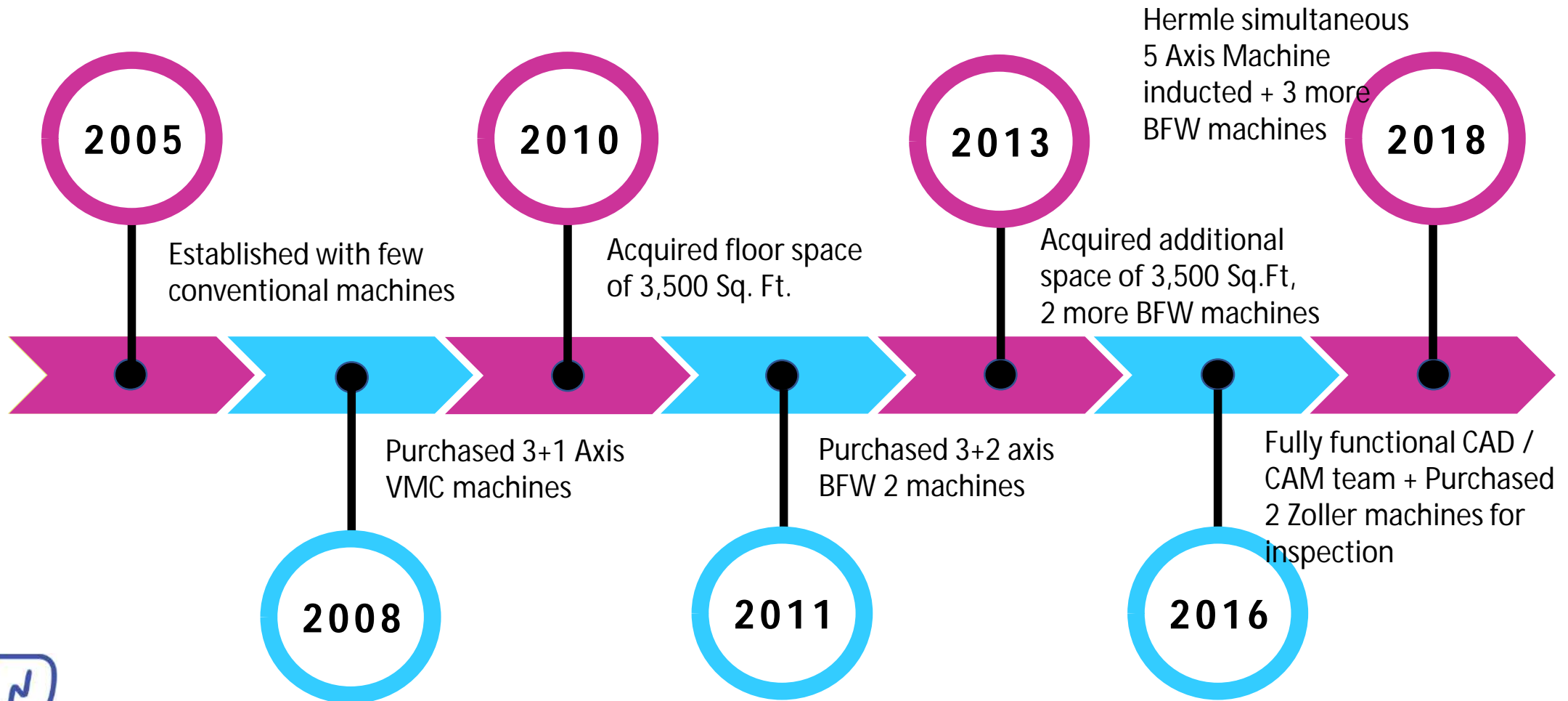
Be the best in class



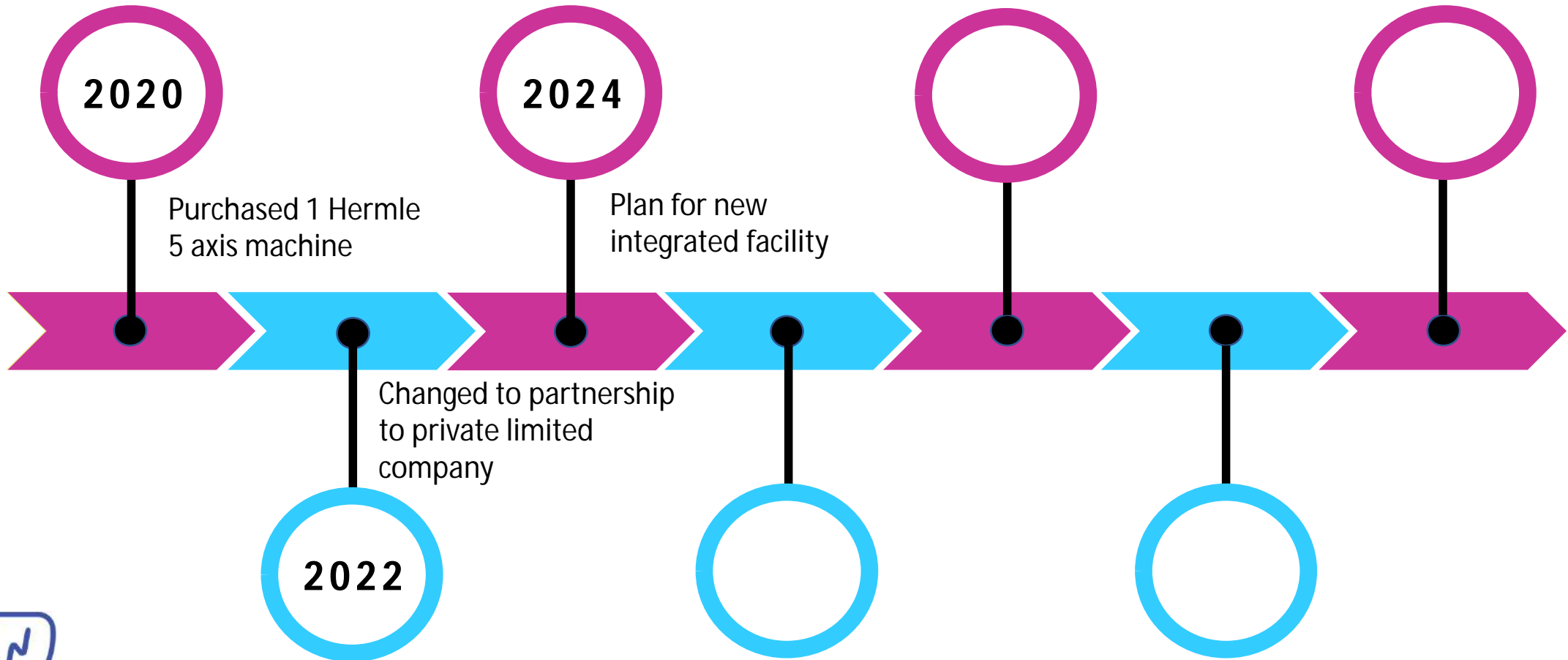
Customer First
One Family
Care For Environment



ROADMAP

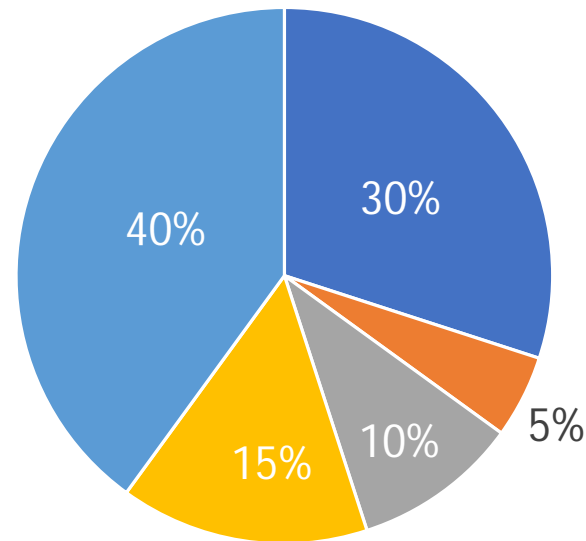


ROADMAP



SEGMENTS

% Revenue Distribution



- Automotive
- Energy
- Mould and Die
- Machine Tool
- Tool Distributor



Not Allowed For Distribution Without Prior Consent , For Internal Use Only

MANUFACTURING SET UP



Hermle C250

Continuous 5 Axis

2 Machines with HSK63 Spindle
primarily used for Milling
Cutters up to $\varnothing 500$



BFW

3 + 2 Axis with Nikken table

7 Machines with BT40 spindle
Primarily used for Tool holders
Cartridges and small diameter
Milling Cutters



JYOTI

3 + 1 Axis with rotary table

2 Machines with BT40 spindle
Primarily used for Drill and
Step Boring



MANUFACTURING SET UP



Jyoti DX200

3 CNC turning machine to finish
Ready to pocket hardened blank



Zoller Smile 400

2 fully automatic non contact
measurement equipment



Akshar Laser Marking

1 with various possibilities of
marking styles

Production facility also supported by conventional milling machines , unit head drilling machines ,
surface and cylindrical grinding machine



Not Allowed For Distribution Without Prior Consent , For Internal Use Only



MANUFACTURING SUPPORT



Manufacturing Space

2 at two location with 6,500 Sq. Ft. floor space , out of it one location having two levels



Employees

80 headcount with average age of 30 , 5 to 25 years of working experience



Cad / Cam

6 Designers - Siemens NX , can do both cad and cam .
3 Designers – Autocad , work as proposal engineers



Customer Support

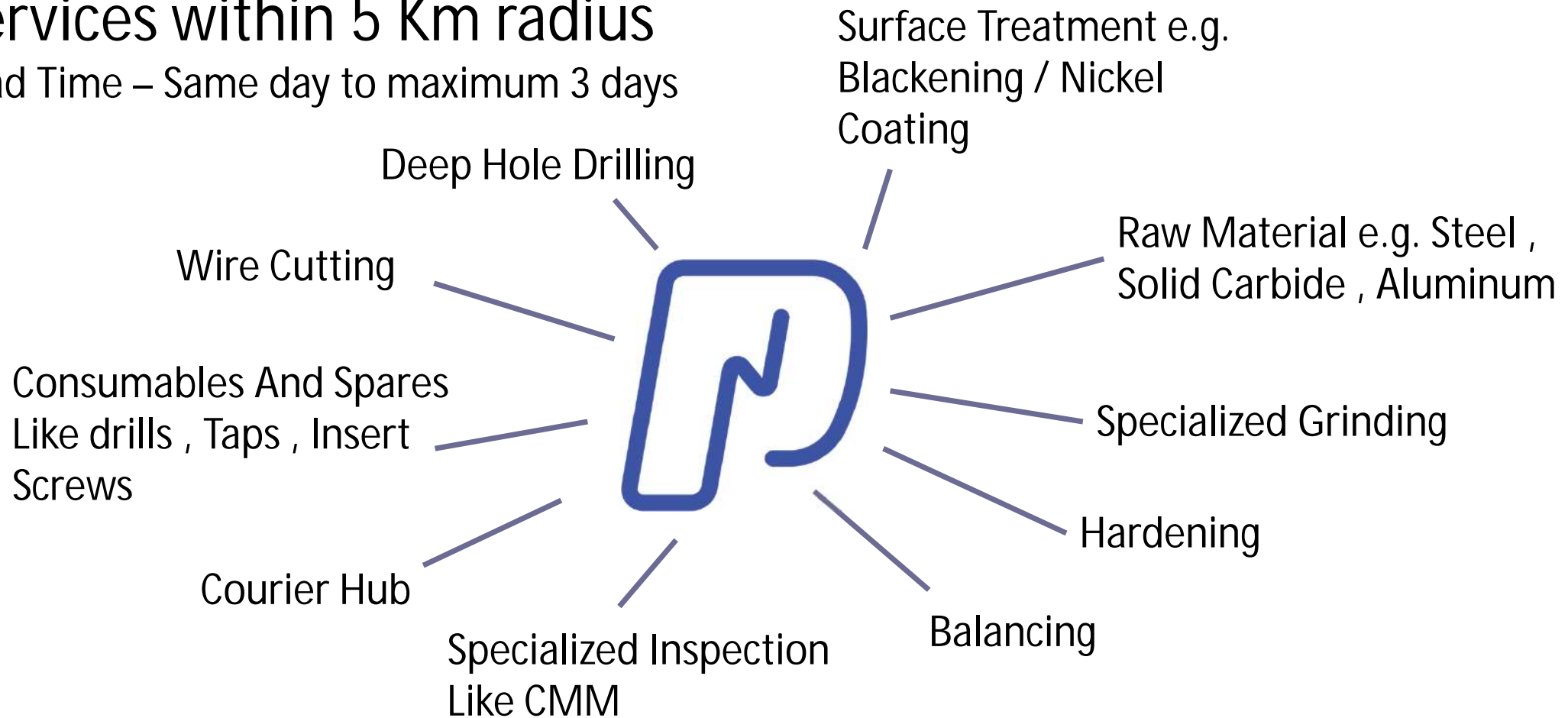
4 Admin staff to render quote , process orders or any other support for customer queries



PRECISE – ECCO SYSTEM

Services within 5 Km radius

Lead Time – Same day to maximum 3 days



CAPACITY

10,000 Pockets Per Month



Tool holders
Cartridges
2,000



Drills
1,000



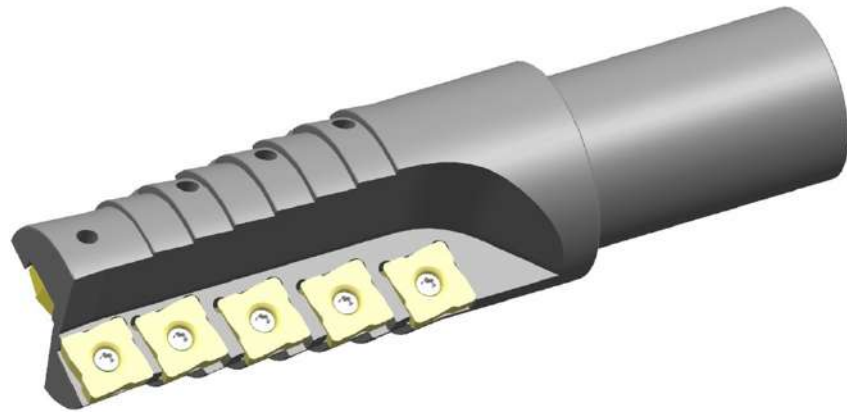
Milling Cutters
6,000



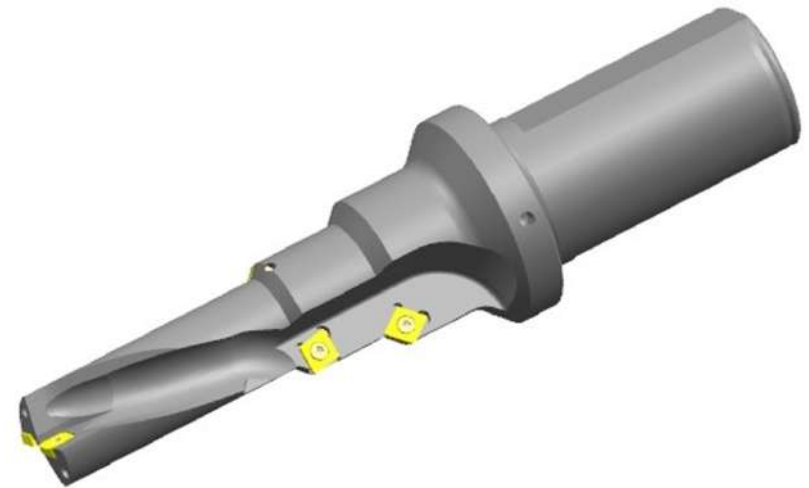
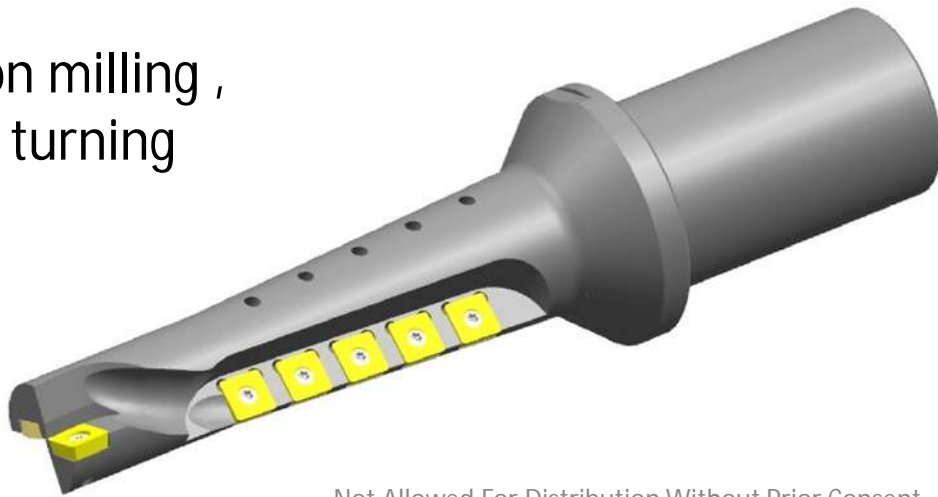
Step Boring
1,000



SPECIAL SOLUTIONS

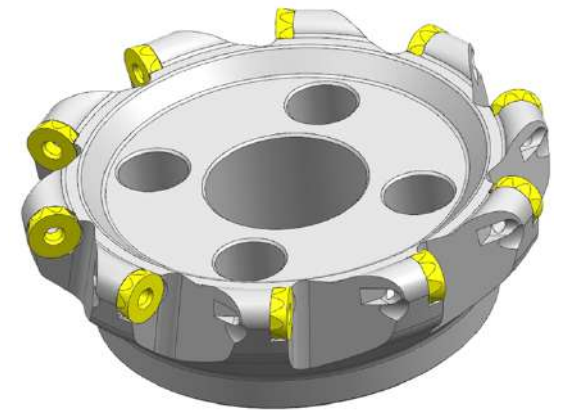
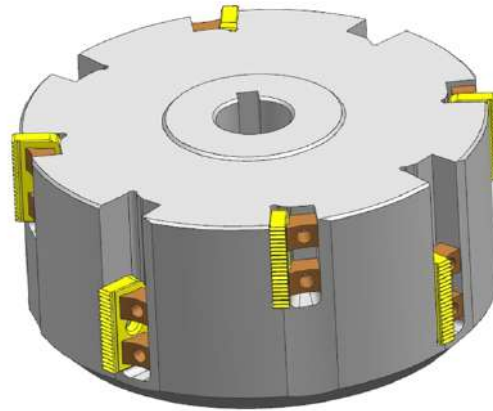
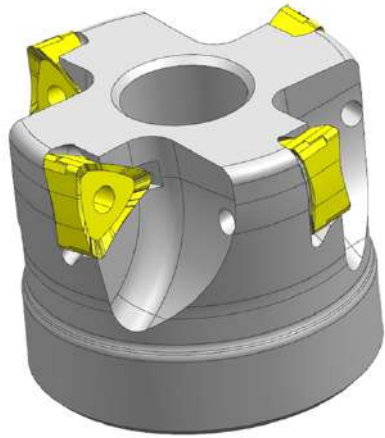


Combination milling ,
drilling and turning
solutions

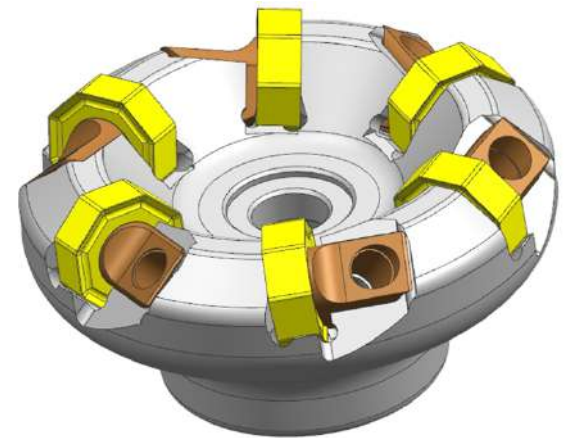
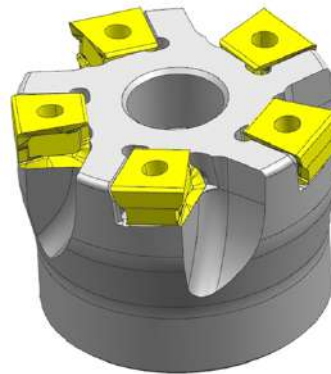


Not Allowed For Distribution Without Prior Consent , For Internal Use Only

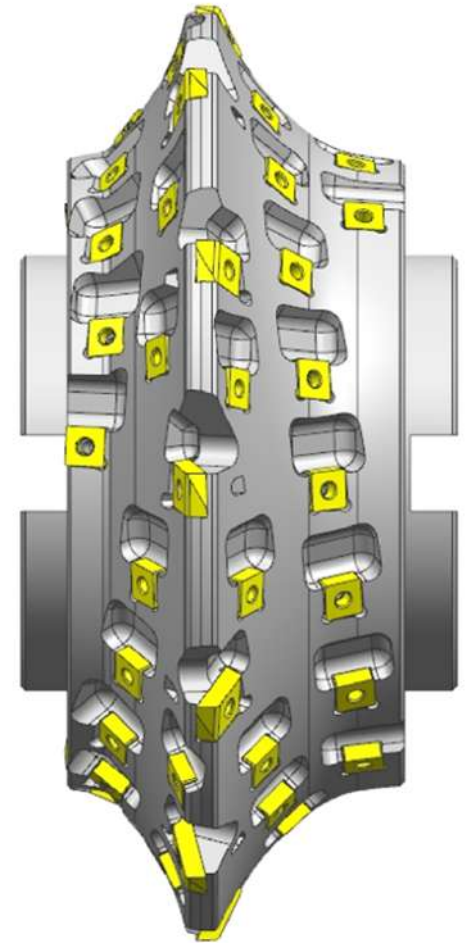
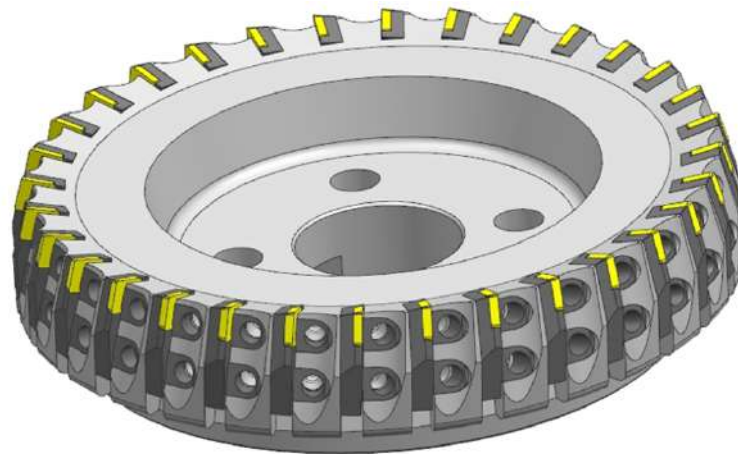
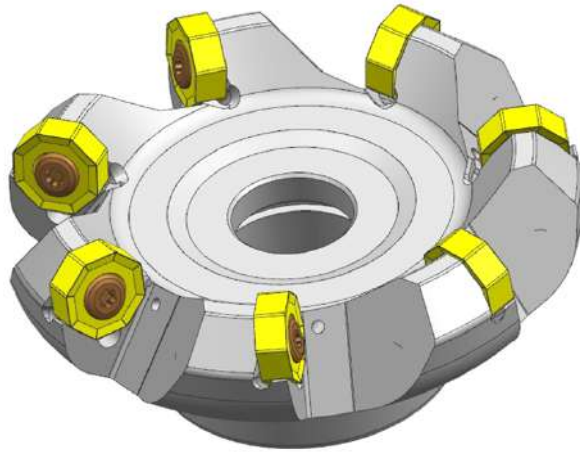
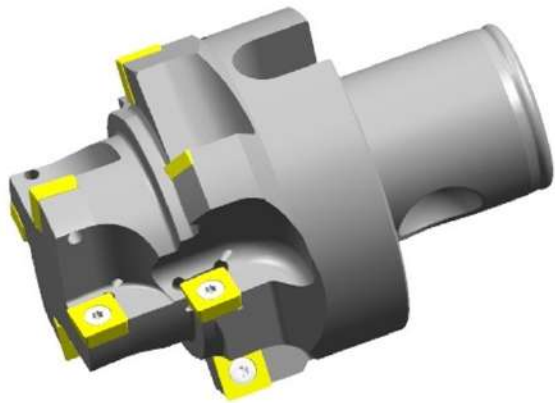
SPECIAL SOLUTIONS



Face milling and
Thread milling
solution



SPECIAL SOLUTIONS

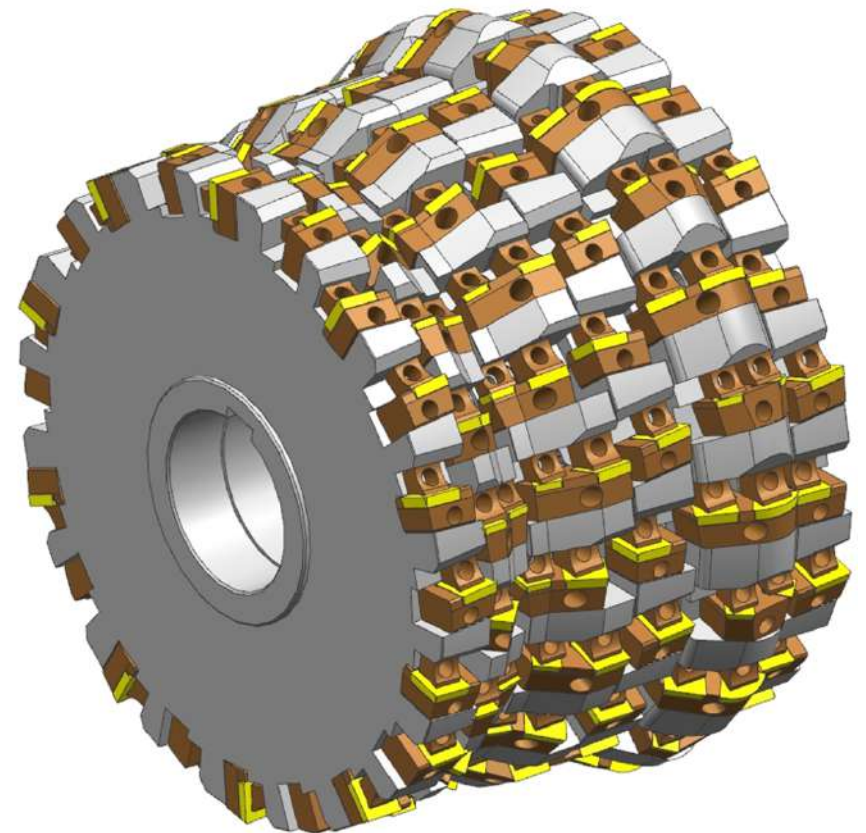
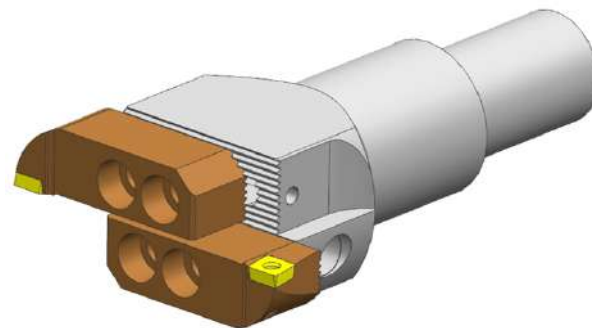
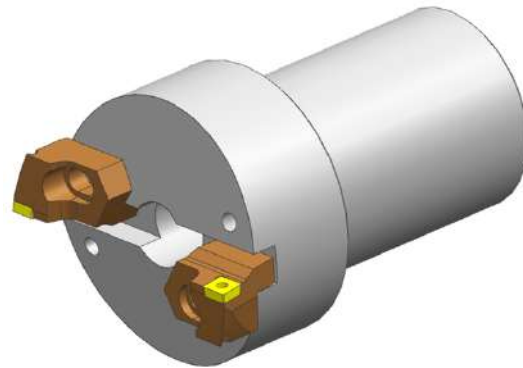
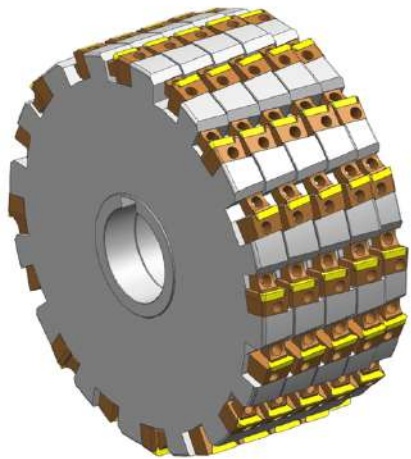


Face and Form
milling solutions



Not Allowed For Distribution Without Prior Consent , For Internal Use Only

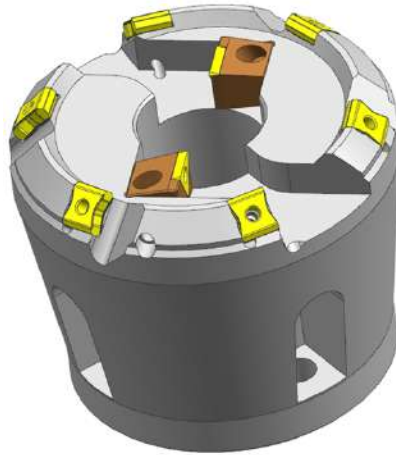
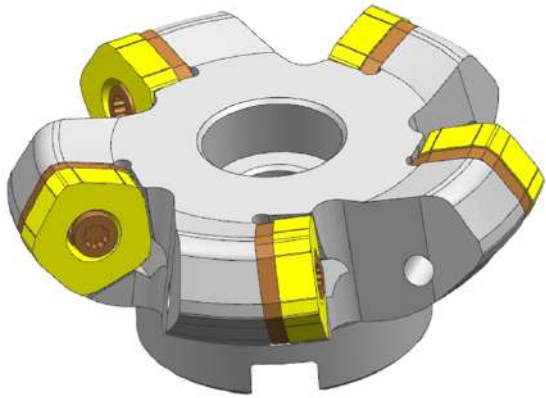
SPECIAL SOLUTIONS



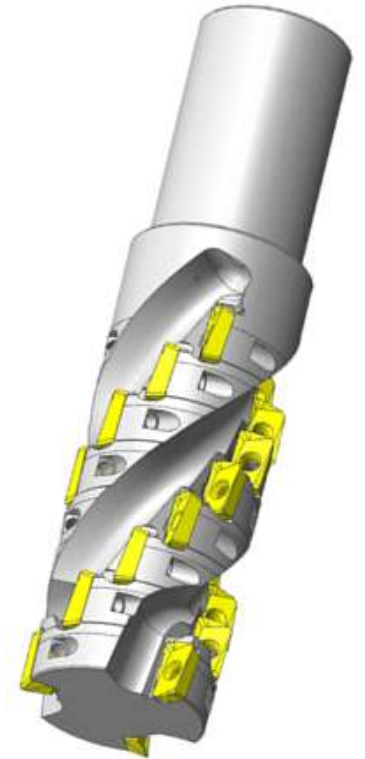
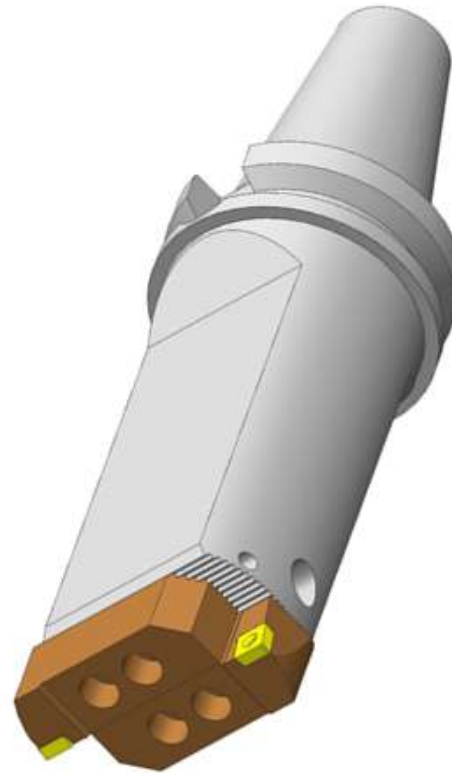
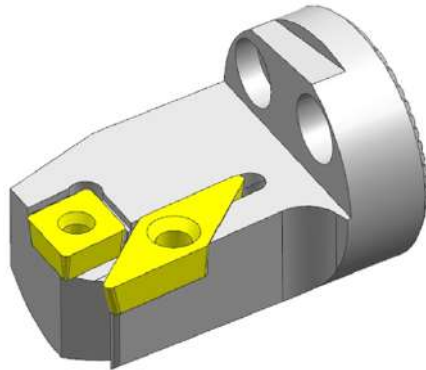
Form milling ,
Boring Solutions



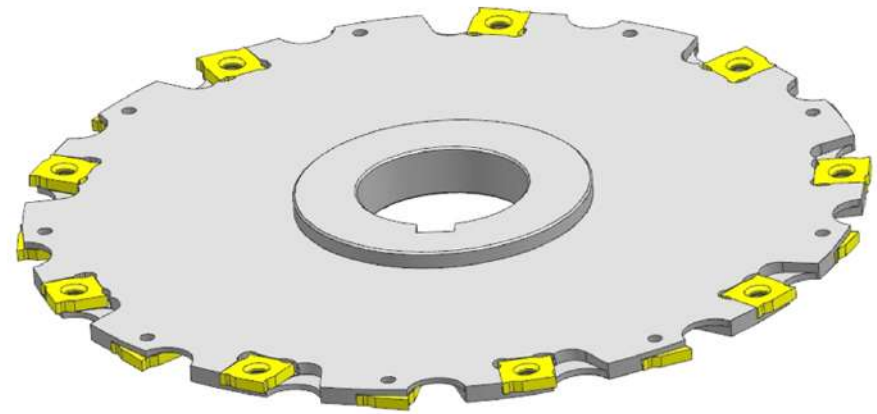
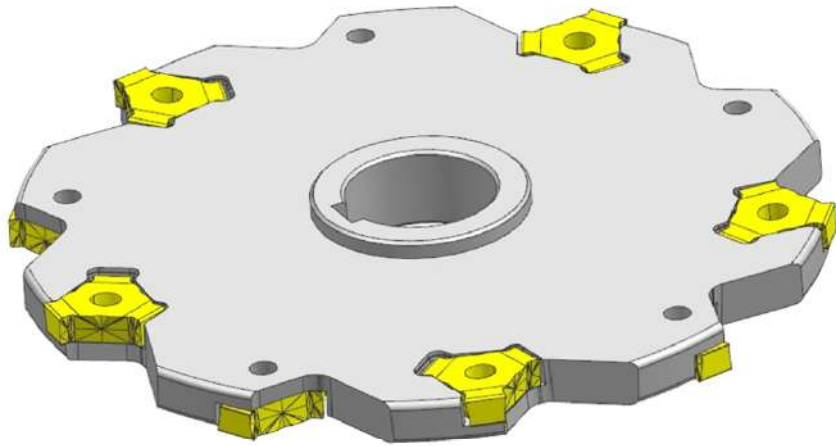
SPECIAL SOLUTIONS



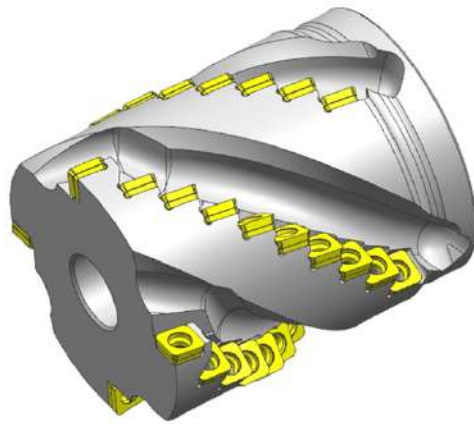
Form milling , Face
milling , Turn and
Boring solutions



SPECIAL SOLUTIONS



Slitting , Long edge
milling , Anti
Vibration boring



SPECIAL SOLUTIONS

Thread and End milling



Not Allowed For Distribution Without Prior Consent , For Internal Use Only

FUTURE PLANS



Mazak Variaxis J-500

- 1 Jul 22 – Being Installed
- 1 Dec 22 – Planned
- 1 Jun 23 – Planned
- 1 Dec 23 – Planned



New Integrated Facility

New land purchase of **25,000 Sq. Ft.** to merge production of existing two facilities . Planned to conclude by end of 2022



IOT

Cloud based integration of IT resources by **end of 2022**



CAD / CAM

4 head count increase for design and nc generation



CONTACT

Lijo Cherian

Director – Sales

lijo.Cherian@precisecuttingtools.com

+ 91 98812 50332

Rajendra Chede

Director – Operations

rajendra.chede@precisecuttingtools.com

+ 91 98506 43212

Jagannath Ponkshe

Director – Business Development

jagannath.ponkshe@precisecuttingtools.com

+ 91 70288 57520

